

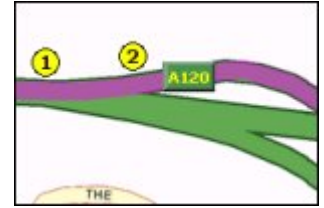
## Directions to the Gilbert School, Colchester



The Gilbert School is located in the North of Colchester, and is most easily reached from the A1232 Ipswich Road in Colchester. Below are instructions to approach North Colchester from [Chelmsford](#), [Ipswich](#) and [Clacton](#). After continues a description of how to [find the Gilbert School from North Colchester](#).

## Approach from Chelmsford:

Continue Northbound on the A12 from Chelmsford until you reach the signpost marked 'Colchester North', and is marked as the A120. This is the very last exit to Colchester, about 5 miles after the Colchester Central and Marks Tey exits. This can be a little confusing as Marks Tey also has an A120. It is signposted as Harwich, Clacton (A120) and Colchester. Take the sliproad here. ①



This sliproad has another sliproad to the left, signposted as Colchester. Travelling straight goes to Clacton and Harwich, so take this sliproad. This will take you to the A1232 North Colchester roundabout ②.

[You can now continue with the instructions below.](#)

## Approach from Ipswich:

Travelling along the A12 from Ipswich head towards Colchester / London. Then take the first turn off to Colchester (sign posted Colchester / Clacton).

[You can now continue with the instructions below.](#)

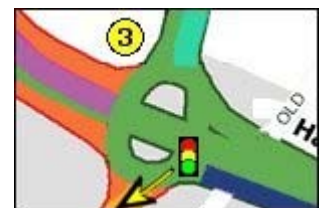
## Approach from Clacton:

From Clacton, Frinton or Walton pick up the signs to the A120 (London). Then take the first turning off signposted to Colchester/Harwich. Turn left at the roundabout to take the A1232 Ipswich Road.

[You can now continue with the instructions below.](#)

## Directions from Colchester North roundabout

You should now be on the A1232 North Colchester Roundabout. On the roundabout are a single set of traffic lights. Straight ahead of these traffic lights is the exit marked as Colchester Town. Take this road and follow it down, past the Honda Garage on your left. This is the A1232 Ipswich Road. ③



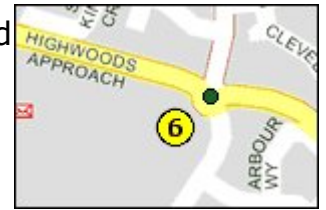
As you follow this road down, you will pass over the first set of traffic lights ④. Continue straight on.



You will reach a roundabout ⑤. Take the third exit (on the right), towards Highwoods, passing the Rovers' Tye pub on the corner of the roundabout on the left.



This leads to another roundabout **6**. This has the Tesco store on the second exit. Take the third exit, which is approximately straight over. This is Highwoods approach.



At the next roundabout, take the third exit again **7**. This should take you down Highclere Road.



The Gilberd School is clearly visible at the next roundabout, on the third exit **8**.

